

# CATALOG

DIESEL AND PETROL GENERATOR SETS

# EnergoGlobal



# Energoglobal



Energoglobal continues its tradition of successful growth with its many years of experience in the field of energy, backup power sources (diesel generating stations and UPS systems), united in a team of experts and partner companies, with the goal of offering the market better quality solutions on competitive terms.

From the very start, relying on the world's top manufacturers of diesel and gasoline engines (Perkins, FPT Iveco, Volvo Penta, Lombardini, Honda, Briggs&Stratton), generators (Linz, Sincro, Marreli, Mecc Alte, Stamford) and manufacturers of electrical equipment (Siemens, Schrack, Noark, Schneider Electric, Eaton, Socomec, ABB), we have been able to become recognized in the market.

We are successfully engaged in consulting, designing, delivery and installation of equipment, automation, repairing and maintenance of existing power stations, UPS systems and special applications of process automation.

### We have the following technical and personnel capacities:

- 3 electrical engineers, one of which is licensed by the responsible contractor and designer,
- 1 mechanical engineer,
- 8 certified service technicians for maintenance of generator sets,
- 5 mobile servicing units in Novi Sad and one in Belgrade,
- Technical support 24/7,
- Spare parts stock,
- Fleet of replacement rental/ rental generator sets with a tendency of constant growth in order to improve the service to our partners



## ► PRODUCTION AND SALES

**New generator sets:** Portable from 3 kVA to 20 kVA / Stationary from 10 kVA to 3000 kVA  
**UPS systems from reputable manufacturers**  
**Used generators:** Large stock from 10 kVA to 2000 kVA  
**Controllers, spare parts for DEA**



## ► SERVICES

- Automation, modernization and repairing
- Service and maintenance
- Design and engineering



## ► RENTING

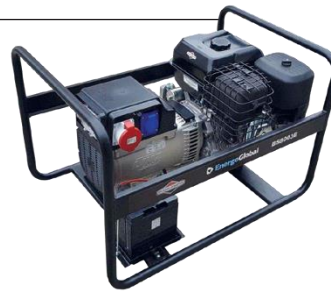
From 3 kVA to 1100 kVA



# PORTABLE GENERATOR SETS

## Portable gasoline gensets

at 3000 rpm with Briggs&Stratton engines



Model	Stand by		Prime		Voltage [V]	Frequency [Hz]	Starting System	Engine	
	kVA	kW	kVA	kW				Manufacturer	Model
BS3001R	3,3	3,3	3	3	230	50	Recoil	Briggs&Stratton	6,5 HP
BS45001R	4,5	4,5	4,2	4,2	230	50	Recoil	Briggs&Stratton	8 HP
BS8001R	8,8	8,8	8	8	230	50	Recoil	Briggs&Stratton	13 HP
BS8001E	8,8	8,8	8	8	230	50	Electricstart	Briggs&Stratton	13 HP
BS8003R	8,8	7	8	6,4	230/400	50	Recoil	Briggs&Stratton	13 HP
BS8003E	8,8	7	8	6,4	230/400	50	Electricstart	Briggs&Stratton	13 HP
BS10001E	10	10	9	9	230	50	Electricstart	Briggs&Stratton	14 HP
BS10003E	10	8	9	7,2	230/400	50	Electricstart	Briggs&Stratton	14 HP
BS13003E	12,5	10	11,5	9,2	230/400	50	Electricstart	Briggs&Stratton	18 HP
BS15003E	15	12	13,5	10,8	230/400	50	Electricstart	Briggs&Stratton	23 HP
BS17003E	17,6	14	16	12,8	230/400	50	Electricstart	Briggs&Stratton	23 HP
BS22003E	22	17,6	20	16	230/400	50	Electricstart	Briggs&Stratton	31 HP

## Portable diesel gensets

at 3000 rpm with Lombardini or Loncin engines



Model	Stand by		Prime		Voltage [V]	Frequency [Hz]	Starting System	Engine	
	kVA	kW	kVA	kW				Manufacturer	Model
LCD5001R	5	5	4,5	4,5	230	50	Recoil	Loncin	D440F(D)
LCD5501E	5	5,5	5	5	230	50	Electricstart	Loncin	D460F(D)
LCD7003E	7	5,6	6,4	5,1	230/400	50	Electricstart	Loncin	D460F(D)
LD8003E	8	6,2	7	5,6	230/400	50	Electricstart	Lombardini	15LD 440
LD8001E	8	7,7	7	7	230	50	Electricstart	Lombardini	15LD 440
LD10003E	10	7,9	9	7,2	230/400	50	Electricstart	Lombardini	12LD330/2
LD13003E	13,8	11	12,5	10	230/400	50	Electricstart	Lombardini	12LD425/2
LD10001E	11	11	10	10	230	50	Electricstart	Lombardini	12LD425/2
LD13001E	13,2	13,2	12	12	230	50	Electricstart	Lombardini	12LD477/2
LD16003E	16,5	13,2	15	12	230/400	50	Electricstart	Lombardini	12LD477/2

R- MANUAL START/ E- ELECTRIC START

Generator sets with electric start (which have the letter E at the end of the model designation)

- can be housed in a soundproof housing for outdoor installation (canopy)

- can be upgraded for automatic operation (automatic start when mains power fails)



# STATIONARY GENERATOR SETS



Model	Stand by		Prime		Voltage [V]	Frequency [Hz]	Engine model
	kVA	kW	kVA	kW			
EG 33 I	33	26.4	30	24	230/400	50	S8000 AM1
EG 55 I	55	44	50	40	230/400	50	N45 AM2
EG 66 I	66	52.8	60	48	230/400	50	N45 SM1A
EG 88 I	88	70.4	80	64	230/400	50	N45 SM3
EG 110 I	110	88	100	80	230/400	50	N45 TM2A
EG 110 I	110	88	100	80	230/400	50	N45 TM3
EG 132 I	132	105.6	120	96	230/400	50	N45 TM3
EG 138 I	138	110.4	125	100	230/400	50	N67 SM1
EG 165 I	165	132	150	120	230/400	50	N67 TM4
EG 176 I	176	140.8	160	128	230/400	50	N67 TM3A
EG 187 I	187	149.6	170	136	230/400	50	N67 TM4
EG 220 I	220	176	200	160	230/400	50	N67 TE2A
EG 220 I	220	176	200	160	230/400	50	N67 TM7
EG 275 I	275	220	250	200	230/400	50	N67 TE8W
EG 330 I	330	264	300	240	230/400	50	C87 TE4
EG 385 I	385	308	350	280	230/400	50	C13 TE2A
EG 440 I	440	352	400	320	230/400	50	C13 TE3A
EG 500 I	500	400	450	360	230/400	50	C13 TE6W
EG 550 I	550	440	500	400	230/400	50	C13 TE7W
EG 660 I	660	528	600	480	230/400	50	C16 TE1W



# Perkins





Model	Stand by		Prime		Voltage [V]	Frequency [Hz]	Engine model
	kVA	kW	kVA	kW			
EG 10 P	10	8	9	7.2	230/400	50	403A-10G1
EG 15 P	15	12	13.5	10.8	230/400	50	403A-15G1
EG 22 P	22	17.6	20	16	230/400	50	404A-22G
EG 33 P	33	26.4	30	24	230/400	50	1103A-33G
EG 46 P	46	36.8	42	33.6	230/400	50	1103A-33TG1
EG 50 P	50	40	45	36	230/400	50	1103A-33TG1
EG 66 P	66	52.8	60	48	230/400	50	1103A-33TG2
EG 88 P	88	70.4	80	64	230/400	50	1104A-44TG2
EG 110 P	110	88	100	80	230/400	50	1104C-44TAG2
EG 150 P	150	120	135	108	230/400	50	1106A-70TAG1
EG 165 P	165	132	150	120	230/400	50	1106A-70TAG2
EG 200 P	200	160	180	144	230/400	50	1106A-70TAG3
EG 220 P	220	176	200	160	230/400	50	1106A-70TAG4
EG 250 P	250	200	230	184	230/400	50	1506A-E88TAG2
EG 275 P	275	220	250	200	230/400	50	1506A-E88TAG3
EG 300 P	300	240	275	220	230/400	50	1506A-E88TAG4
EG 330 P	330	264	300	240	230/400	50	1506A-E88TAG5
EG 385 P	385	308	350	280	230/400	50	2206A-E13TAG2
EG 440 P	440	352	400	320	230/400	50	2206A-E13TAG3
EG 500 P	500	400	450	360	230/400	50	2506A-E15TAG1
EG 550 P	550	440	500	400	230/400	50	2506A-E15TAG2
EG 660 P	660	528	600	480	230/400	50	2806A-E18TAG1
EG 725 P	725	580	650	520	230/400	50	2806A-E18TAG2
EG 825 P	825	660	750	600	230/400	50	4006-23TAG2A
EG 880 P	880	704	800	640	230/400	50	4006-23TAG3A
EG 900 P	900	720	800	640	230/400	50	4006-23TAG3A
EG 1000 P	1000	800	900	720	230/400	50	4008TAG1A
EG 1100 P	1100	880	1000	800	230/400	50	4008TAG2A
EG 1385 P	1385	1108	1250	1000	230/400	50	4012-46TWG2A
EG 1500 P	1500	1200	1365	1092	230/400	50	4012-46TWG3A
EG 1650 P	1650	1320	1500	1200	230/400	50	4012-46TAG2A
EG 1900 P	1880	1504	1710	1368	230/400	50	4012 46TAG3A
EG 2000 P	2030	1624	1845	1476	230/400	50	4016 TAG1A





# VOLVO PENTA

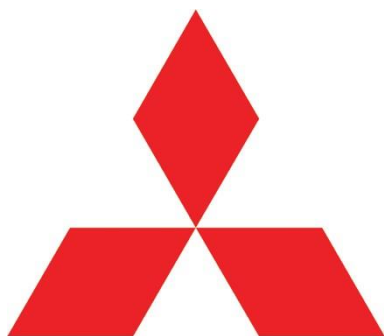
Model	Stand by		Prime		Voltage [V]	Frequency [Hz]	Engine model
	kVA	kW	kVA	kW			
EG 110 V	110	88	100	80	230/400	50	TAD531GE
EG 143 V	143	114.4	130	104	230/400	50	TAD532GE
EG 165 V	165	132	150	120	230/400	50	TAD731GE
EG 200 V	200	160	180	144	230/400	50	TAD732GE
EG 220 V	220	176	200	160	230/400	50	TAD733GE
EG 275 V	275	220	250	200	230/400	50	TAD734GE
EG 330 V	330	264	300	240	230/400	50	TAD1341GE
EG 385 V	385	308	350	280	230/400	50	TAD1342GE
EG 415 V	415	332	375	300	230/400	50	TAD1343GE
EG 450 V	450	360	410	328	230/400	50	TAD1344GE
EG 500 V	500	400	455	364	230/400	50	TAD1345GE
EG 500 V	500	400	460	368	230/400	50	TAD1640GE
EG 550 V	550	440	500	400	230/400	50	TAD1641GE
EG 660 V	660	528	600	480	230/400	50	TAD1642GE
EG 700 V	700	560	630	504	230/400	50	TWD1643GE
EG 715 V	715	572	650	520	230/400	50	TWD1644GE
EG 770 V	770	616	700	560	230/400	50	TWD1645GE



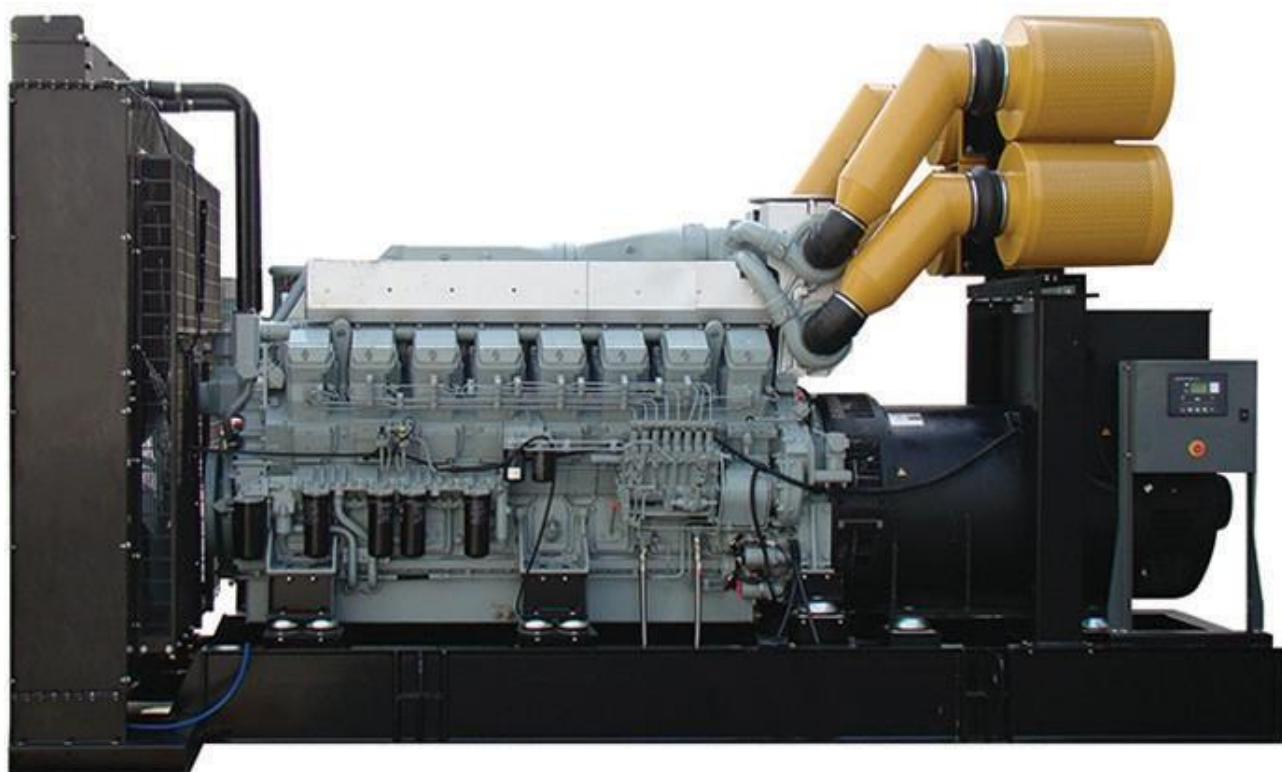


Model	Stand by		Prime		Voltage [V]	Frequency [Hz]	Engine model
	kVA	kW	kVA	kW			
EG 140 D	140	112	127	101.6	230/400	50	D1146T
EG 170 D	170	136	155	124	230/400	50	DP086TA
EG 220 D	220	176	200	160	230/400	50	P086TI
EG 255 D	255	204	231	184.8	230/400	50	DP086LA
EG 275 D	275	220	250	200	230/400	50	P126TI
EG 330 D	330	264	300	240	230/400	50	P126TI-II
EG 410 D	410	328	375	300	230/400	50	P158LE-1
EG 440 D	440	352	400	320	230/400	50	P158LE
EG 485 D	485	388	440	352	230/400	50	P158LE
EG 510 D	510	408	465	372	230/400	50	DP158LC
EG 585 D	580	464	525	420	230/400	50	DP158LD
EG 630 D	635	508	577	461.6	230/400	50	DP180LA
EG 710 D	710	568	640	512	230/400	50	DP180LB
EG 750 D	750	600	680	544	230/400	50	DP222LB
EG 825 D	825	660	750	600	230/400	50	DP222LC





# mitsubishi



Model	Stand by		Prime		Voltage [V]	Frequency [Hz]	Engine model
	kVA	kW	kVA	kW			
EG 825 M	825	660	750	600	230/400	50	S6R2-PTAA
EG 880 M	880	704	800	640	230/400	50	S12A2-PTA
EG 1100 M	1100	880	1000	800	230/400	50	S12H-PTA
EG 1425 M	1425	1140	1290	1032	230/400	50	S12R-PTA
EG 1650 M	1650	1320	1500	1200	230/400	50	S12R-PTAA2
EG 1915 M	1915	1532	1750	1400	230/400	50	S16R-PTA
EG 2100 M	2100	1680	1875	1500	230/400	50	S16R-PTA2
EG 2250 M	2250	1800	2000	1600	230/400	50	S16R-PTAA2
EG 2500 M	2500	2000	2250	1800	230/400	50	S16R2-PTAW



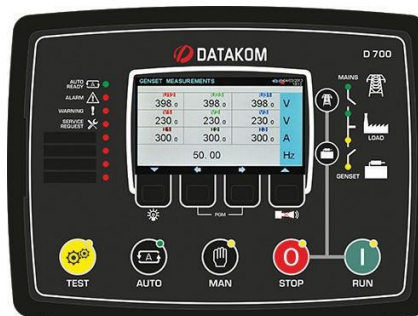
## ECOBOX

Model	Stand by		Prime		Voltage [V]	Frequency [Hz]	Engine model
	kVA	kW	kVA	kW			
ECOBX 17	17	13.6	15.5	12.4	230/400	50	EgE4.17
ECOBX 22	22	17.6	20	16	230/400	50	EgE4.22
ECOBX 28	28	22.4	25.5	20.4	230/400	50	EgE4.28
ECOBX 35	35	28	32	25.6	230/400	50	EgE4.35
ECOBX 40	40	32	36	28.8	230/400	50	EgE4.40
ECOBX 50	50	40	46	36.8	230/400	50	EgE4.50
ECOBX 75	75	60	68	54.4	230/400	50	EgE4.75
ECOBX 90	90	72	82	65.6	230/400	50	EgE4.90
ECOBX 110	110	88	100	80	230/400	50	EgE4.110
ECOBX 150	150	120	137	109.6	230/400	50	EgE6.150
ECOBX 170	170	136	155	124	230/400	50	EgE6.170
ECOBX 200	200	160	182	145.6	230/400	50	EgE6.200
ECOBX 220	220	176	200	160	230/400	50	EgE6.220
ECOBX 275	275	220	250	200	230/400	50	EgE6.275
ECOBX 300	300	240	273	218.4	230/400	50	EgE6.300
ECOBX 440	440	352	400	320	230/400	50	EgE6.440
ECOBX 550	550	440	500	400	230/400	50	EgE12.550
ECOBX 600	600	480	545	436	230/400	50	EgE12.600
ECOBX 660	660	528	600	480	230/400	50	EgE12.660
ECOBX 725	725	580	659	527.2	230/400	50	EgE12.725
ECOBX 800	800	640	727	581.6	230/400	50	EgE12.800
ECOBX 850	850	680	773	618.4	230/400	50	EgE12.850
ECOBX 1000	1000	800	910	728	230/400	50	EgE12.1000

# ALTERNATORS



# CONTROLLERS



# TRACTOR GENERATOR SETS

Power from 6-40 kVA at 3000 rpm

Model	Max. power		Rated power		Output voltage	Tractor power [hP]	Tractor shaft speed 0/min
	kVA	kW	kVA	kW			
EGT 8	7,7	6,2	7,0	5,6	400/230	20	440
EGT 10	9,9	7,9	9,0	7,2	400/230	25	440
EGT 15	14,9	11,9	13,5	10,8	400/230	30	440
EGT 22	22,0	17,6	20,0	16,0	400/230	45	440
EGT 27	27,5	22,0	25,0	20,0	400/230	55	440
EGT 38	38,5	30,8	35,0	28,0	400/230	80	440

# WELDING GENERATOR SETS

- Gasoline and diesel engines
- Output power 100-600 A
- DC welding

# CONTROL AND MANAGEMENT SYSTEMS

- For manual and automatic genset start
- For automatic start (AMF) at power failure
- For parallel work and synchronization with the mains
- For remote control and monitoring of genset operation



# LIGHTING TOWERS

Lighting towers are designed to be temporary light sources in areas where there is no electricity or where you want to temporarily improve lighting. They are most often used on construction sites, on sports fields, in warehouses, camps and areas that serve to protect people in case of emergencies such as earthquakes, floods, etc.

Energoglobal offers several types and options of light towers:

- with manual or hydraulic column lifting,
- pillar height from 5 to 9 meters,
- several types of lamps: metal halide, LED...
- with open or soundproof canopy ,
- with gasoline or diesel engines.



Model	Stand by		Prime		Voltage [V]	Frequency [Hz]	Engine model
	kVA	kW	kVA	kW			
EGLT8	8	8	7.3	7.3	230	50	Mitsubishi / L3E
EGLT11	11	11	10	10	230	50	Mitsubishi / S3L2
EGLT16	16	16	14.5	14.5	230	50	Mitsubishi / S4L2

# ACCESSORIES AND SPARE PARTS

- Controllers (Datakom, ComAp, Deif, DSE)
- Voltage regulators AVR's,
- Battery chargers,
- Engines (Briggs&Stratton, Honda, Lombardini, Perkins, FPT, Deutz, Volvo, Daewoo),
- Alternators (Linz, Marelli, MeccAlte, Sincro...)
- Filters and spare parts for generator sets,
- Containers – Canopy soundproof enclosures (in accordance with the directive 2000/14/EC).



Energoglobal d.o.o.  
Fruškogorska 57 • 21410 Futog  
Tel./Fax: +381 21 499 315  
e-mail: [office@energoglobal.com](mailto:office@energoglobal.com)

[www.dizelagregat.com](http://www.dizelagregat.com)  
[www.polovniagregati.rs](http://www.polovniagregati.rs)  
[www.energoglobal.com](http://www.energoglobal.com)

## REFERENCE CUSTOMERS

